

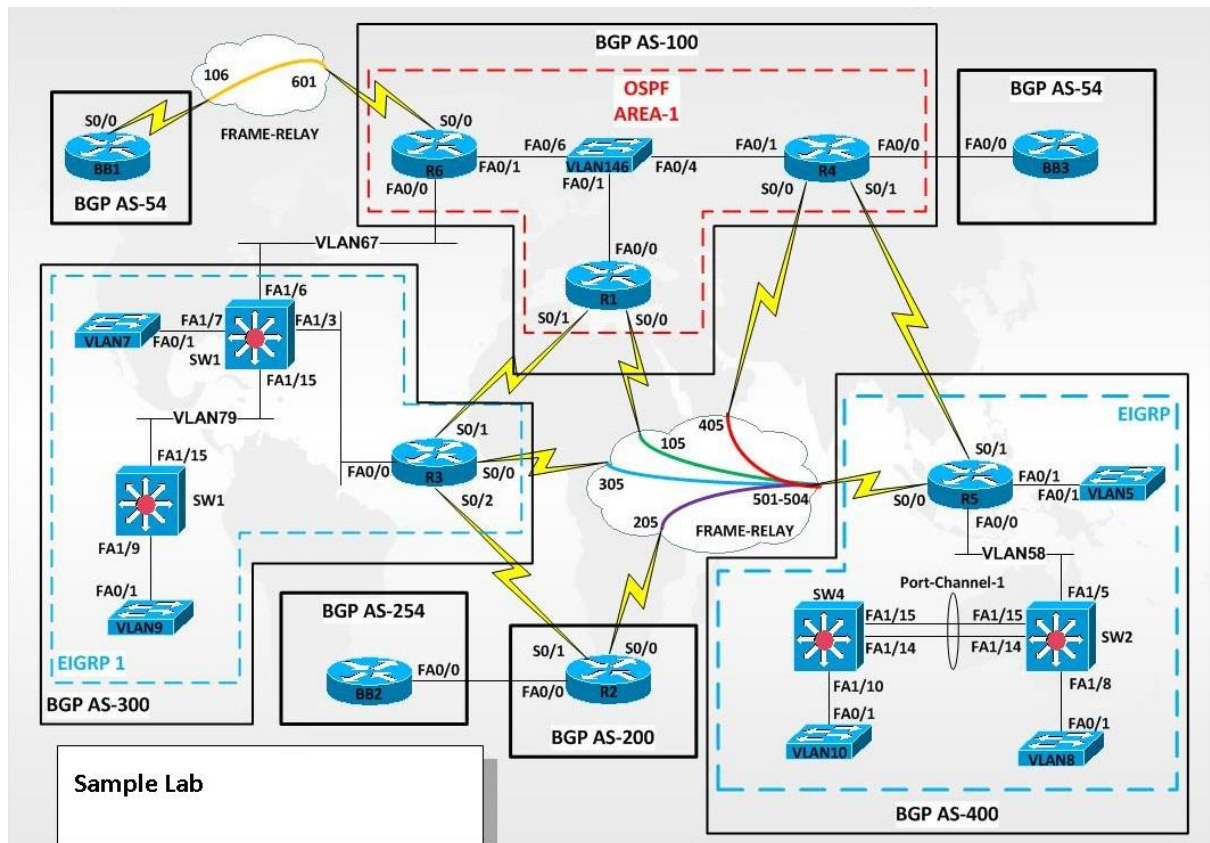
CCNP SIMULATED INTERNSHIP

The CCNP Simulated Internship will allow you to build and configure a complex network using skills gained throughout the course. This lab is not a trivial task. To complete it as outlined with all required documentation would be a significant accomplishment.

The lab scenario describes the project in general terms, and will explain why the network is being built. Following the scenario, the project is broken into a number of phases, each of which has a detailed list of requirements. It is crucial that you read and understand each requirement to make sure that the project is complete.

This project requires that you accomplish the following:

- ❖ Set up the physical layout of the network using the diagram accompanying narrative.
- ❖ Correctly configure DHCP
- ❖ Correctly configure NAT/PAT
- ❖ Correctly configure multi-area OSPF
- ❖ Correctly configure RIPv2
- ❖ Correctly configuring EIGRP with advanced features
- ❖ Correctly configure VLAN (Voice and Data) and 802.1Q trunk.
- ❖ Route manipulation using tools like offset-list, route-map etc
- ❖ Implementing Route redistribution as per the requirements
- ❖ Implementing loop avoidance in multi-home networks
- ❖ Implementing Policy based routing to avoid the under and overutilization of links
- ❖ Create and apply access control lists on the appropriate routers and interfaces.
- ❖ Implement Layer 2 and Layer 3 security.
- ❖ Enable network to support IPv6
- ❖ Implementing IPv4 to IPv6 migration techniques
- ❖ Verify that all configuration are operational and functioning according to the scenario guideline
- ❖ Provide detailed documentation in a prescribed form as listed in the deliverables sections



* CCNP Simulated Internship is designed by Koenig SMEs as per the industry trends. Detailed network diagrams, hand-outs and task list can be provided after registration. Above is a sample network diagram.